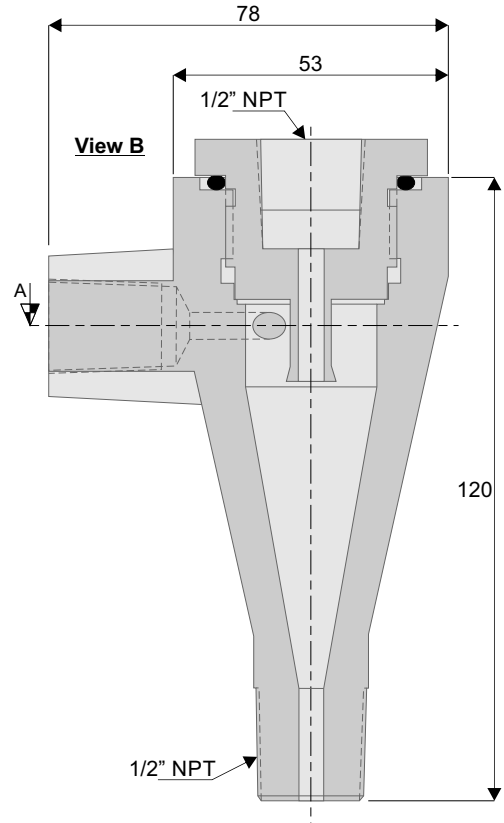
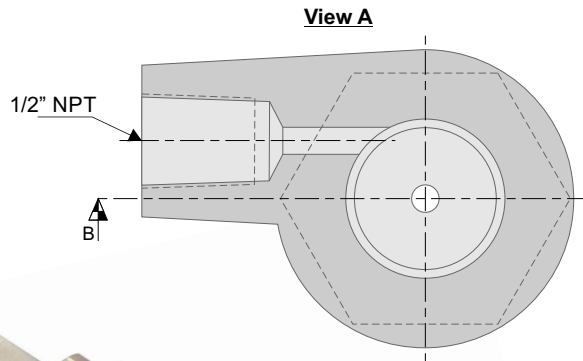


Cyclone Separator



The SCYC Cyclone Separator is designed to separate heavy particles from the product liquid. The clean fluid is introduced as flush fluid to the seal faces, while the separated particles drain back into the suction side of the pump. The benefit is a reliable and low-cost sealing system where there is heavy product particles present, thus not requiring an independent flush supply.

- Abrasive Particle Size – Bigger is better, minimum 1 micron
- Specific Gravity of Particles – Must be greater than the fluid's SG
- Solids Content – Do not exceed 10% solids by volume.
- Fluid Viscosity – Do not exceed 25 centistokes.
- Differential Pressure – Between 1.5 and 13 bar difference between inlet and two outlet lines.
- Outlet Pressures – Dirty water and clean water pressure to be within 10% of each other.

Features	Benefits
316 S/S standard construction	➤ Hard wearing materials of construction guarantee long product life in abrasive industries
Large internal clearances	➤ Restricts the potential for clogging
Works from pump discharge	➤ Does not require a water source for seal flush fluid