



S80

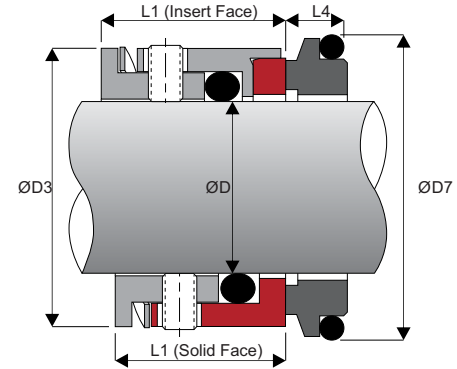
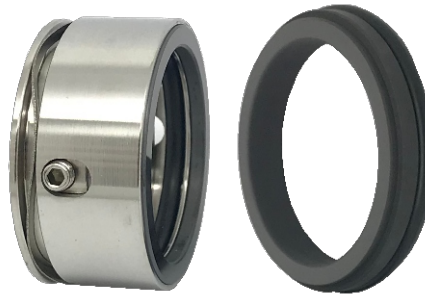
Wave Spring Seal

Materials

- Rotary - Sic / SSic / TC / SS
- Stationary - Car / Sic / SSic / TC
- Elastomer - NBR / EPDM / Viton / FFKM / Aflas

Working Conditions

- Pressure ≤ 12 bar
- Speed ≤ 20 m/s
- Temperature up to 205°C



Shaft ØD	ØD3	L1		SSW011	
		Solid Face	Insert Face	Insert Face	ØD7
15.8	27.0	19.1	19.6	19.6	28.5
16.0	27.0	19.1	19.6	19.6	28.5
19.1	30.0	19.1	20.1	20.1	31.7
24.0	34.1	19.1	20.1	20.1	35.4
28.0	40.0	19.1	20.1	20.1	42
28.6	39.5	19.1	20.1	20.1	41.2
30.0	41.0	19.1	20.1	20.1	42.7
31.7	42.4	19.1	20.1	20.1	44.2
32.0	42.4	19.1	20.1	20.1	44.4
35.0	45.5	19.1	20.1	20.1	47.6
38.0	51.8	21.1	21.5	21.5	53.9
44.4	58.2	21.1	21.5	21.5	60.3
47.6	61.4	21.1	21.5	21.5	63.5
50.0	61.9	21.1	21.5	21.5	63.9
50.8	64.6	22.1	22.5	22.5	66.6
53.9	71.0	22.1	23.2	23.2	73
54.0	71.0	22.1	23.2	23.2	73.9
55.0	72.0	22.1	23.2	23.2	75
63.0	79.3	25.8	27.4	27.4	83
63.5	79.3	25.8	27.4	27.4	88.9
69.8	88.9	25.8	27.4	27.4	95.2
73.0	94.0	25.8	27.4	27.4	98.4
75.0	96.0	25.8	27.4	27.4	100.4
76.2	96.0	25.8	27.4	27.4	100.4

SSW011 - Inoxpa Prolac and SLR Pumps		
Shaft ØD	L4	ØD7
28.0	10.1	46
35.0	12.0	53
50.0	12.0	70

