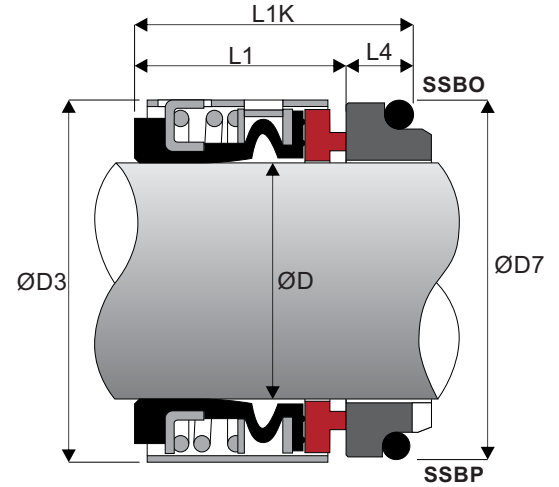
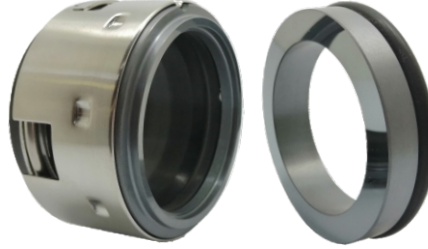


Materials

Stationary	- Car / SiC / SSiC / TC
Rotary	- Car / SiC / SSiC / TC
Elastomer	- NBR / EPDM / Viton

Working Conditions

Pressure	< 12 bar
Speed	< 12 m/s
Temperature up to	150°C



Metric		ØD3	L1	L1K	SSBO/SSBP	
Shaft ØD	Code				ØD7	L4
14	0140	24	23.0	35.0	25	12.0
16	0160	26	23.0	35.0	27	12.0
18	0180	32	24.0	37.5	33	13.5
20	0200	34	24.0	37.5	35	13.5
22	0220	36	24.0	37.5	37	13.5
24	0240	38	26.7	40.0	39	13.3
25	0250	39	27.0	40.0	40	13.0
28	0280	42	30.0	42.5	43	12.5
30	0300	44	30.5	42.5	45	12.0
32	0320	46	30.5	42.5	48	12.0
33	0330	47	30.5	42.5	48	12.0
35	0350	49	30.5	42.5	50	12.0
38	0380	54	32.0	45.0	56	13.0
40	0400	56	32.0	45.0	58	13.0
43	0430	59	32.0	45.0	61	13.0
45	0450	61	32.0	45.0	63	13.0
48	0480	64	32.0	45.0	66	13.0
50	0500	66	34.0	47.5	70	13.5
53	0530	69	34.0	47.5	73	13.5
55	0550	71	34.0	47.5	75	13.5
58	0580	78	39.0	52.5	78	13.5
60	0600	80	39.0	52.5	80	13.5
63	0630	83	39.0	52.5	83	13.5
65	0650	85	39.0	52.5	85	13.5
68	0680	88	39.0	52.5	90	13.5
70	0700	90	45.5	60.0	92	14.5
75	0750	95	45.5	60.0	97	14.5
80	0800	104	45.0	60.0	105	15.0
85	0850	109	45.0	60.0	110	15.0
90	0900	114	50.0	65.0	115	15.0
95	0950	119	50.0	65.0	120	15.0
100	1000	124	50.0	65.0	125	15.0