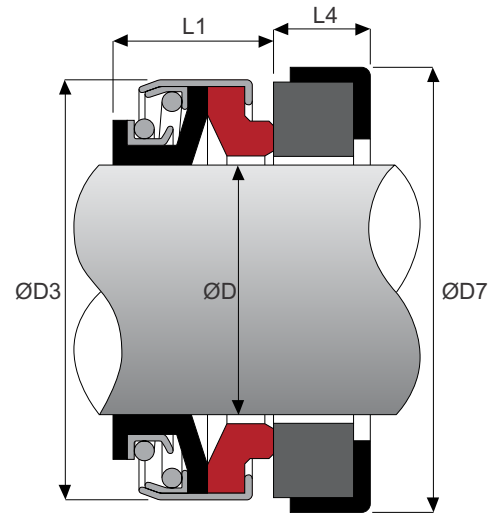
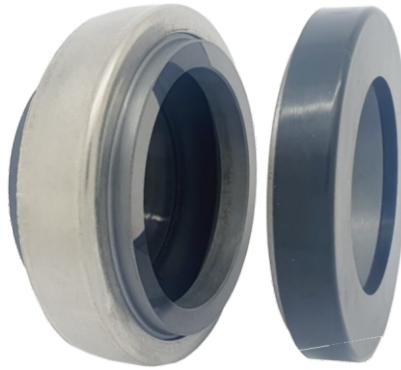


### Materials

Rotary	- Cer / Sic
Stationary	- Car / Sic
Elastomer	- NBR / EPDM / Viton

### Working Conditions

Pressure	≤ 5 bar
Speed	≤ 10 m/s
Temperature	up to 100°C



Metric		ØD3	ØD7	L1	L4
Shaft ØD	Code				
6	0060	18.0	22.0	11.0	4.0
8	0080	18.0	22.0	11.0	4.0
8	008A	24.0	26.0	11.0	8.0
10	0100	24.0	26.0	13.0	8.0
11	011A	24.0	26.0	13.0	8.0
12	012A	24.0	26.0	13.0	5.5
12	012B	24.0	26.0	13.0	8.0
12	012C	32.0	35.0	13.0	8.0
13	013A	24.0	26.0	13.0	8.0
13	013B	24.0	26.0	11.0	5.5
13	013D	24.0	25.0	16.4	7.8
14	014A	32.0	35.0	13.0	8.0
14	014B	28.0	28.0	13.0	8.0
14	014C	32.0	29.5	13.0	8.0
14	014D	32.0	26.0	13.0	7.5
14	014E	32.0	38.0	13.0	8.0
14	014F	28.0	30.0	13.0	8.0
14	014P	27.5	28.5	13.0	8.0
15	015C	32.0	29.5	13.5	8.0
15	015P	27.5	30.0	13.0	8.0
16	016A	32.0	38.0	13.0	8.0
16	016B	39.0	42.0	13.0	8.0
16	016C	32.0	29.5	13.5	8.0
16	016E	32.0	30.0	13.0	7.0
16	016P	27.5	30.0	13.0	8.0
16	016S	28.0	29.5	13.0	8.0
17	0170	39.0	42.0	13.0	8.0

Metric		ØD3	ØD7	L1	L4
Shaft ØD	Code				
18	0180	39	42	13.0	8
19	0190	39	42	13.0	8
20	020A	39	42	13.0	8
20	020B	42	45	13.0	10
20	020P	35	38	13.0	8
22	0220	42	45	13.0	10
23	0230	47	50	13.5	10
24	0240	47	50	13.5	10
25	025A	47	50	13.5	10
25	025B	42	50	13.5	10
25	025D	42	40	12.8	6
25	025P	42	45	13.5	10
26	0260	47	50	13.5	10
27	0270	47	50	13.5	10
28	0280	54	57	15.0	10
30	0300	54	57	15.0	10
32	0320	54	57	15.0	10
35	0350	60	63	16.0	10
35	035B	60	57	16.0	10
38	0380	65	68	18.0	12
40	0400	65	68	18.0	12
45	0450	70	73	20.0	12
50	0500	85	88	23.0	15
55	0550	85	88	23.0	15
60	0600	105	110	30.0	15
65	0650	105	110	30.0	15
70	0700	105	110	32.0	15