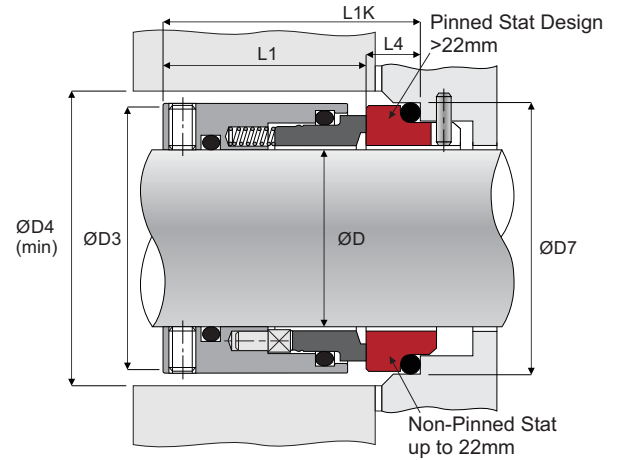
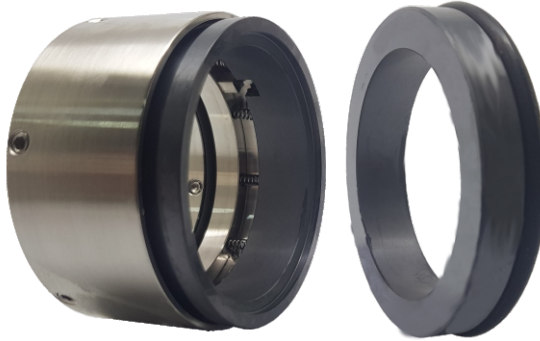


Materials

- Rotary - Car / SiC / SSiC / TC
- Stationary - Cer / Sic / SSiC / TC
- Elastomer - NBR / EPDM / Viton / Aflas / FFKM

Working Conditions

- Pressure ≤ 30 bar
- Speed ≤ 30 m/s
- Temperature up to 205°C



Shaft ØD	ØD3	ØD4 (min)	L1	L1K	Stationary Seat		Seat Type
					ØD7	L4	
18	32	34	31.5	37.5	33	6	SSBS
20	34	36	31.5	37.5	35	6	SSBS
22	36	38	31.5	37.5	37	6	SSBS
24	38	40	33.0	40.0	39	7	SS16
25	39	41	33.0	40.0	40	7	SS16
28	42	44	32.5	42.5	43	10	SSDL
30	44	46	32.5	42.5	45	10	SSDL
32	46	48	32.5	42.5	48	10	SSDL
33	47	49	32.5	42.5	48	10	SSDL
35	49	51	32.5	42.5	50	10	SSDL
38	53	56	34.0	45.0	56	11	SSDL
40	55	58	34.0	45.0	58	11	SSDL
43	58	61	34.0	45.0	61	11	SSDL
45	60	63	34.0	45.0	63	11	SSDL
48	63	66	34.0	45.0	66	11	SSDL
50	66	69	34.0	47.5	70	13.5	SSBP
53	69	72	34.0	47.5	73	13.5	SSBP
55	71	74	34.0	47.5	75	13.5	SSBP
58	76	80	39.0	52.5	78	13.5	SSBP
60	78	82	39.0	52.5	80	13.5	SSBP
63	81	85	39.0	52.5	83	13.5	SSBP
65	83	87	39.0	52.5	85	13.5	SSBP
70	88	92	44.7	60.0	92	15.3	SSDL
75	93	97	44.7	60.0	97	15.3	SSDL
80	103	107	45.0	60.0	105	15	SSBP
85	108	112	45.0	60.0	110	15	SSBP
90	113	117	50.0	65.0	115	15	SSBP
95	118	122	50.0	65.0	120	15	SSBP
100	123	127	50.0	65.0	125	15	SSBP